

# GRIP 130

Log grip





# **BRUGGER**

## **An essential aid!**

The Grip 130 log grip with a 3 ton continuous rotor and a clamping force of 85 kn is suited for farmers, forestry operators and all those who need a reliable grapple for their timber work.



## **Specifications:**

- ✓ Clamp opening 130 cm
- ✓ Rear 3-point hitch connection
- ✓ Euro-type front connection
- ✓ Rotation force 3 ton 360°

## **Features of the Grip 130:**



### **Clamp opening 130cm!**

Maximum clamp opening 1300mm  
Minimum clamp opening 70mm  
Clamping force 85kn



### **Front connection!**

The clamps can be mounted on any front loader or wheel loader with EURO attachment.



### **Rear connection!**

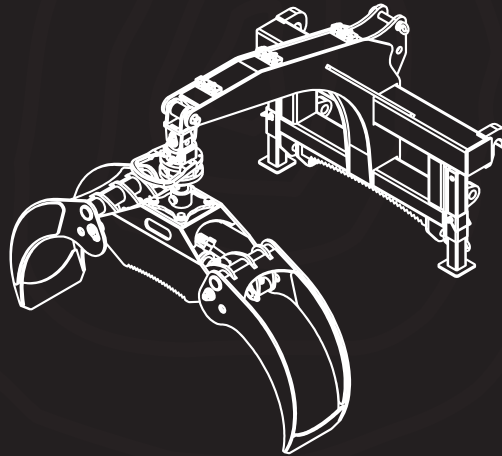
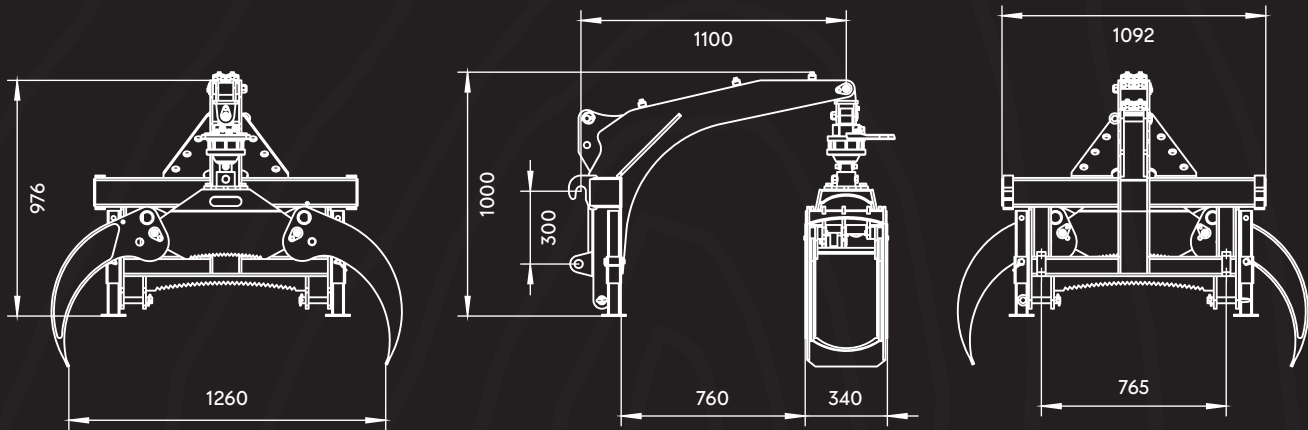
The Grip 130 can also be connected to the rear three-point hitch Cat 1-2.

# GRIP 130

## Log clamp

### Technical dimensions:

We have summarized all the important key figures, dimensions and performance data for you here.



### Technical data:

Manufacturer:	Brugger
Model:	Grip 130
Max. clamp opening:	130 cm
Min. Clamp opening:	7 cm
Arm lenght:	110 cm
Clamping force:	85kN
Rotor:	rotational force 3t continuous on 360°
Clamp width:	40 cm
Tractor front connection:	Euro
Tractor rear connection:	Cat 1/2
Approximative weight:	310 kg

# GRIP 130

## Log grip

The Brugger Grip 130 log grip **with 3-tonne endless rotor** is the ideal solution for efficient moving and handling of logs and wood.

The clamps have an **opening of 130 cm** and are equipped with a powerful rotor for precise control and rotation.

The versatile attachment options make the Grip 130 extremely flexible. It can be easily attached to the tractor with a **rear three-point hitch or to the front loader with a Euro hitch**.

This adaptability allows for efficient log handling in various application areas.

The Brugger Grip 130 hydraulic grapple offers an impressive 130 cm opening and is equipped with a powerful **3 tonne rotor** with 360° continuous rotation.

**The Grip 130 hydraulic grip is built with simple technology and is therefore very, very easy to use, requiring simple maintenance.**

The Brugger Grip 130 hydraulic grab is the ideal solution for **professional forestry operators and timber transport companies who** appreciate its efficiency, performance and reliability.

With its robust construction and its versatility, it is a indispensable tool for mastering demanding forestry work. With a weight of 310 kg, it is robust and at the same time light enough for various applications in **forestry and timber transport**.

Euro and three-point attachment: the GRIP130 timber grapple is equipped with a **front Euro hitch and a**

**a rear three-point hitch** (Cat. 1 / Cat. 2), which allow quick and easy attachment to various carrier vehicles and increase its versatility.

The robust construction and high-quality workmanship guarantee longevity and reliability even under difficult conditions.

The Brugger Grip 130 grapple is the perfect choice for **farmers, forestry operators and anyone who needs a reliable grapple for timber work**.

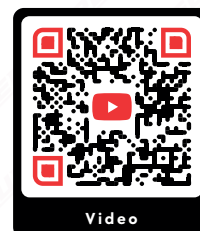
You can see a video of the machine in action here:

**[www.youtube.com/watch?v=I25NZRUC-Eg](https://www.youtube.com/watch?v=I25NZRUC-Eg)**

**For further informations on the machine:**

**[www.bruggermachinery.com](http://www.bruggermachinery.com).**

Scan the QR CODE and watch the video!







**BRUGGER**  
Machinery GmbH





**Optionals****Switching valve 12V**

Can be used if only one double-acting hydraulic circuit is available.

**Log Grapple GRIP 130**

Grip 130 grippers are the ideal solution for efficient Log handling.





**BRUGGER**

Machinery GmbH



**BRUGGER**

Sawmill BS31 Pro



**BRUGGER**

Automatic log cutter and splitter SA 48 Pro

# WIDE RANGE OF MACHINES FOR THE TOUGHEST CHALLENGES.

Discover our wide range of powerful forestry and log processing machines at:  
[www.bruggermachinery.com](http://www.bruggermachinery.com).

Take advantage of our range now!

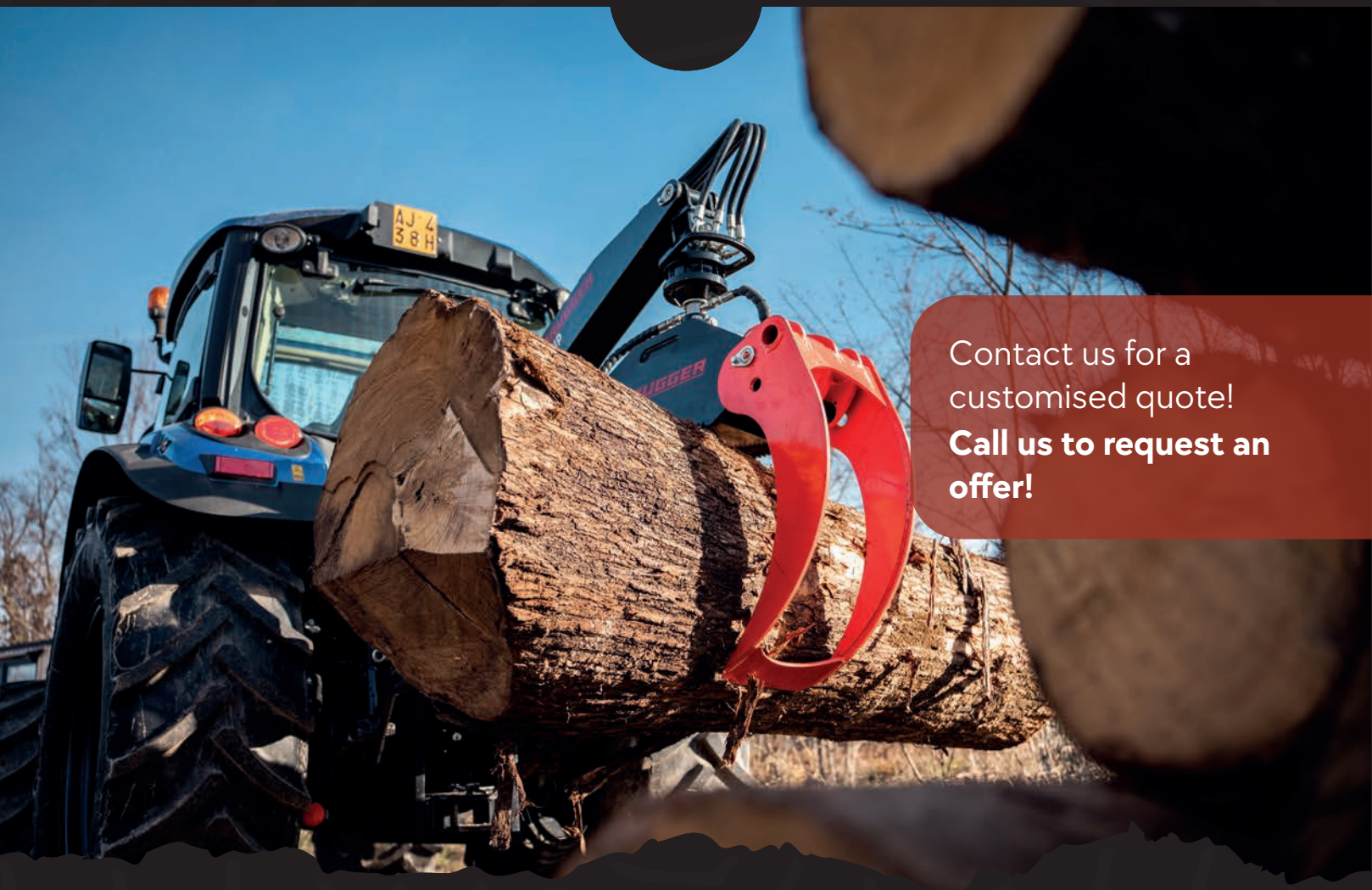
[www.bruggermachinery.com](http://www.bruggermachinery.com)





**BRUGGER**

Machinery GmbH



Contact us for a  
customised quote!  
**Call us to request an  
offer!**

# Passion for Forest Machinery

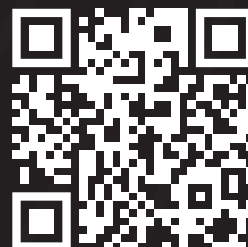
**BRUGGER**

**Brugger Machinery**

Bacherweg 11  
39030 Gais BZ Italien

Tele: +39 327 397 0120  
Mail: [info@bruggermachinery.com](mailto:info@bruggermachinery.com)  
Web: [www.bruggermachinery.com](http://www.bruggermachinery.com)

The information in this brochure contains information and content that are protected by law.



Version: 1.0 | EN

[www.bruggermachinery.com](http://www.bruggermachinery.com)

