

Power Split

S22 - S30

Vertical log splitter



BRUGGER

A powerful engine!

Suitable for a wide range of applications, the S22/S30 vertical log splitter offers maximum drive flexibility, either through the electric motor or through the tractor's PTO.



Specifications:

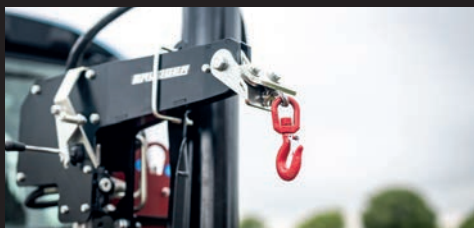
- ✓ Adjustable splitting speed
- ✓ Adjustable splitting stroke
- ✓ Electric motor + PTO
- ✓ Integrated log lifter
- ✓ Max. splitting length 110 cm

Advantages of the S22 / S30:



Dual drive!

The log splitter is driven by the powerful integrated electric motor or via connection to the tractor's PTO.



Hydraulic wire winch!

The hydraulic wire winch (supplied as an optional) makes work even easier for approaching and positioning logs. The winch can only be used with the log splitter connected to the tractor lift.

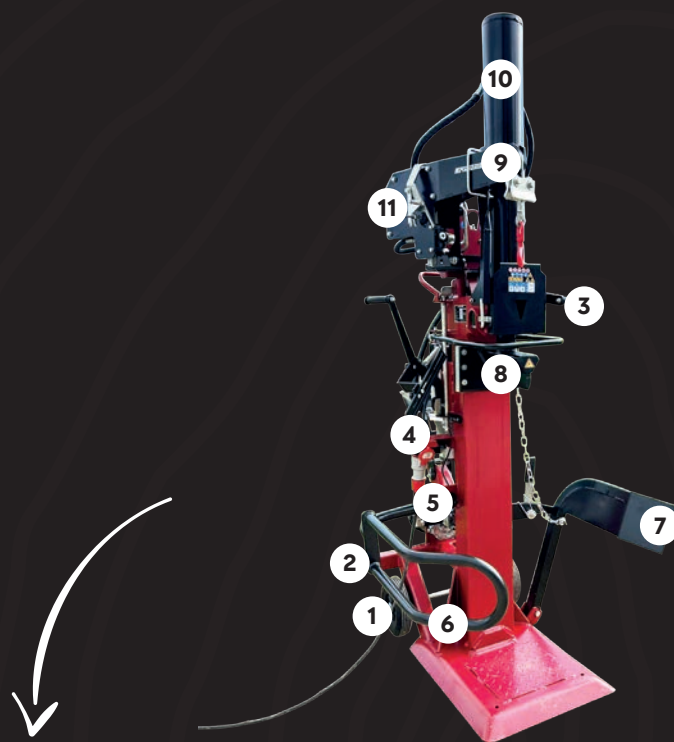


Easy to move!

Thanks to the integrated wheels, the log splitter, which weighs around 400 kg, can also be moved easily by hand.

S22 - S30

Vertical log splitter



Components:

- | | | |
|---|--|------------------------------------|
| 1. Wheels for manual movement | 5. PTO attachment | 9. hydraulic wire winch (optional) |
| 2. Connection for three-point linkage CAT I | 6. adjustable protective arm (support arm) | 10. splitting cylinder |
| 3. Two-hand operation lever | 7. log lifter | 11. Winch drive |
| 4. 16A electrical plug | 8. splitting wedge | |

Technical data:

Manufacturer:	Brugger	Brugger
Model:	Power Split S22	Power Split S30
Power input:	Electric motor + PTO	Electric motor + PTO
Electric motor power:	5kW 400V	5,5kW 400V
Splitting force:	22T	30T
Maximum splitting length:	110 cm	110 cm
Hydraulic oil capacity:	24l	30l
Forward speed:	4,3 / 10,5 m/min	3,7 / 12,5 m/min
Return speed:	7,5 m/min	6,7 m/min
Dimensions in working configuration:	130 x 145 x 247 cm	130 x 145 x 247 cm
Dimensions in transport configuration:	130 x 96 x 200 cm	130 x 96 x 200 cm
Approximative weight:	335 kg	386 kg

Power Split

S22 - S30

Vertical splitter

With an impressive splitting **force of up to 22 tonnes (Power Split S22) or 30 tonnes (Power Split S30)**, these vertical log splitters offer a powerful solution for splitting even the hardest logs.

These robust machines are ideal for a wide range of applications and offer maximum drive flexibility, either via the electric motor or via the tractor's PTO.

The splitting process takes place at two splitting wedge speeds, which enables fast and efficient processing of the timber.

The basic equipment includes a log lifter, which facilitates the handling of heavy logs. **A hydraulic rope winch is available as an option, which offers further application options and makes work easier. This offers further application options and makes work easier.**

The Brugger Power Split S22 and S30 vertical log splitters are the ideal choice for anyone looking for a reliable and powerful solution for splitting wood, whether for professional or private use.

The log splitters are powered either via a 5kW 400V (Power Split S22) or 5.5kW 400V (Power Split S30) electric motor or via the tractor's power take-off.

With a maximum **cutting length of up to 110 cm**, these log splitters offer a **powerful solution for splitting even the hardest logs.**

Thanks to the log lifting system

which facilitates their handling, the positioning of heavy logs is easier.

Built according to the latest safety standards, these vertical log splitters are reliable and safe work equipment for the user. This makes them safe and reliable machines for everyday use.

The log splitters have two splitting speed, a faster one for bringing the wedge closer to the log and a slower one for the splitting process.

When splitting short logs, the return stroke can be quickly and easily adjusted to avoid no-load travel.

With the hydraulic rope winch (optional), the work is even easier.

The winch can only be used when the log splitter is connected to the tractor lift. **The integrated log lift can be used for even the heaviest pieces of wood, which can easily be lifted vertically.**

If you are looking for a reliable partner for efficient log splitting, the Brugger Power Split S22 / S30 are the ideal choices.

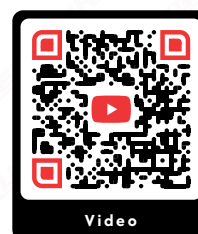
You can see a video of the machine in action here:

www.youtube.com/watch?v=a0P-tjGoeMg

For further informations on che machine:

www.bruggermachinery.com.

Scan the QR CODE and watch the video!







Accessories:



Hydraulic wire winch

Traction force 4,8kN, speed 0,6 m/s, wire length 19 m.



Support table!

Support table for short logs. Height 50 cm.



4-edge wedge!

(In the UE, the use of this splitting wedge with the log splitter is forbidden due to the new norm UE EN 609:2017).



BRUGGER
Machinery GmbH

BRUGGER

Log grip Grip 130



BRUGGER

Automatic log cutter and splitter SA 48 Pro

WIDE RANGE OF MACHINES FOR THE TOUGHEST CHALLENGES.

Scoprite la nostra vasta gamma di potenti macchine per la silvicoltura e la lavorazione dei tronchi su: www.bruggermachinery.com.

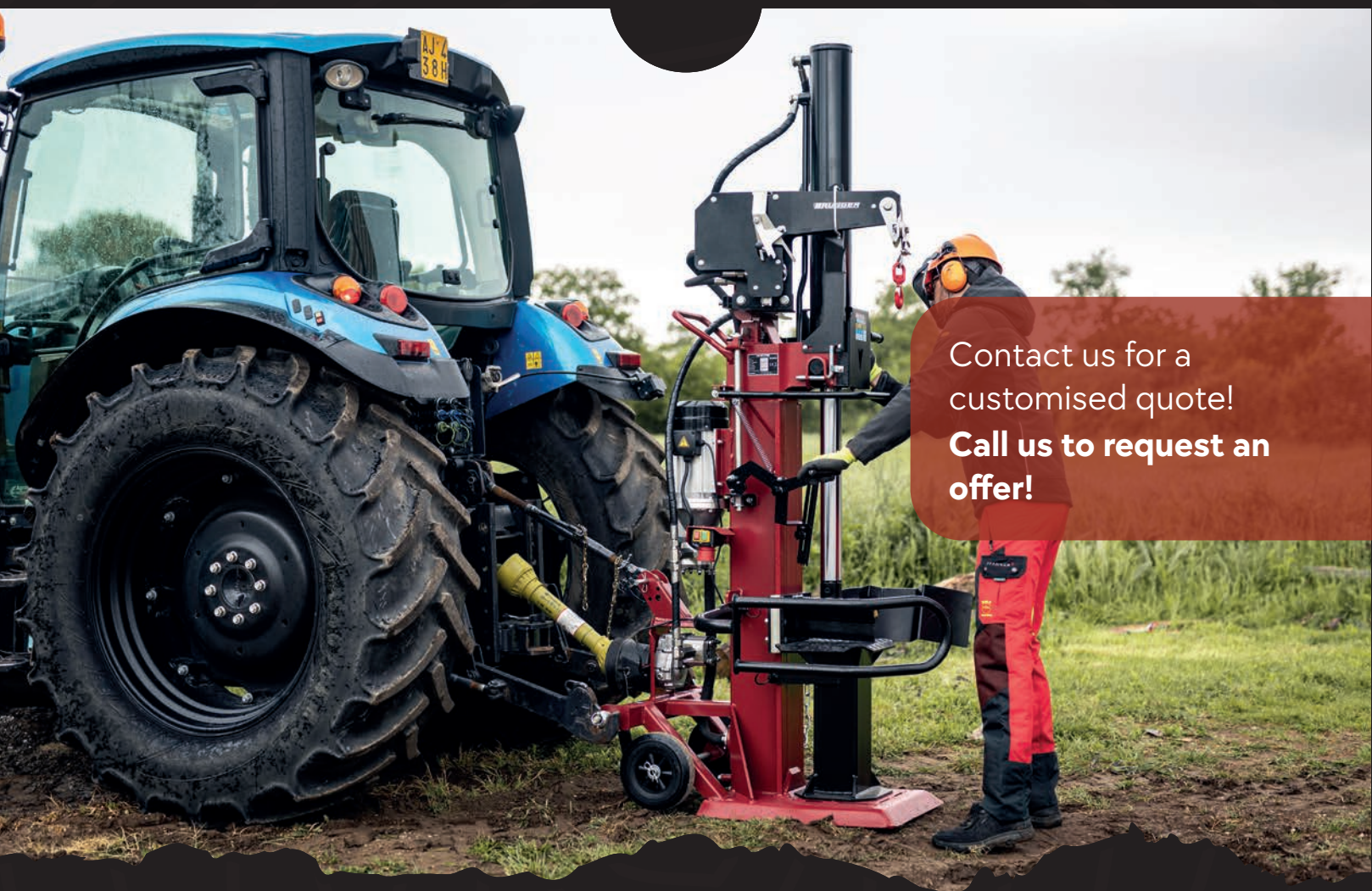
Take advantage of our range now!

www.bruggermachinery.com



BRUGGER

Machinery GmbH



Contact us for a
customised quote!
**Call us to request an
offer!**

Passion for Forest Machinery

BRUGGER

Brugger Machinery

Bacherweg 11
39030 Gais BZ Italien

Tele: +39 327 397 0120
Mail: info@bruggermachinery.com
Web: www.bruggermachinery.com

The information in this brochure contains information and content that are protected by law.



Version: 1.0 | EN

www.bruggermachinery.com

